



# **Pulsonix Design System Unattended Installation**

## 2 Unattended Installation

---

### Copyright Notice

Copyright © WestDev Ltd. 2001-2022

Pulsonix is a Trademark of WestDev Ltd. All rights reserved. E&OE

Copyright in the whole and every part of this software and manual belongs to WestDev Ltd. and may not be used, sold, transferred, copied or reproduced in whole or in part in any manner or in any media to any person, without the prior written consent of WestDev Ltd. If you use this manual you do so at your own risk and on the understanding that neither WestDev Ltd. nor associated companies shall be liable for any loss or damage of any kind.

WestDev Ltd. does not warrant that the software package will function properly in every hardware software environment.

Although WestDev Ltd. has tested the software and reviewed the documentation, WestDev Ltd. makes no warranty or representation, either express or implied, with respect to this software or documentation, their quality, performance, merchantability, or fitness for a particular purpose. This software and documentation are licensed 'as is', and you the licensee, by making use thereof, are assuming the entire risk as to their quality and performance.

In no event will WestDev Ltd. be liable for direct, indirect, special, incidental, or consequential damage arising out of the use or inability to use the software or documentation, even if advised of the possibility of such damages.

WestDev Ltd. reserves the right to alter, modify, correct and upgrade our software programs and publications without notice and without incurring liability.

Microsoft, Windows, Windows NT and Intellimouse are either registered trademarks or trademarks of Microsoft Corporation.

All other trademarks are acknowledged to their respective owners.

Pulsonix, a division of WestDev Ltd.

Printed in the UK.

Issue date: 07/04/22 Issue 1

#### **Pulsonix**

20 Miller Court  
Severn Drive  
Tewkesbury  
Glos, GL20 8DN  
United Kingdom

Phone +44 (0)1684 296 551  
Support +44 (0)1684 296 570  
Email [sales@pulsonix.com](mailto:sales@pulsonix.com)  
Support [support@pulsonix.com](mailto:support@pulsonix.com)  
Web [www.pulsonix.com](http://www.pulsonix.com)

# Contents

<b>CONTENTS .....</b>	<b>3</b>
<b>UNATTENDED INSTALLATION .....</b>	<b>4</b>
How it works .....	4
Preparation.....	4
What you will need.....	4
Recording installer choices.....	6
Replaying the installer .....	7
Custom installations .....	7

# Unattended Installation

The information provided below is intended to assist you in preparing and carrying out unattended installation of the Pulsonix application.

## How it works

Unattended installation is done in two stages.

First, you run the normal installation once, entering the details and making choices which will then be applied to all further installations. This first installation acts as a kind of ‘template’ that defines how the software is to be installed on all the other systems.

Once you have successfully completed the first installation, you use the information recorded in the first stage to run unattended installations on as many other computers as you wish, by ‘replaying’ the installer using the recorded settings.

All the settings for each unattended installation (program folders, location of license file, etc.) will be exactly as recorded in the setup file you create in the first stage so you end up with an exact replica of the first installation on all subsequent machines.

Exactly how this unattended installation process is run will depend on things like the type of management software you are using to manage software on your workstations. We cannot give you detailed instructions for achieving unattended installation with your particular management package, but the information given in this document should be enough to allow you to prepare the files required by our installer to get a properly configured copy of Pulsonix onto those workstations.

## Preparation

### What you will need

Preparing and running unattended installations requires you to run the InstallShield setup wizard (Setup.exe) from a command prompt with some additional switches, so you need a copy of the relevant files collected together so that your unattended installations have everything they need.

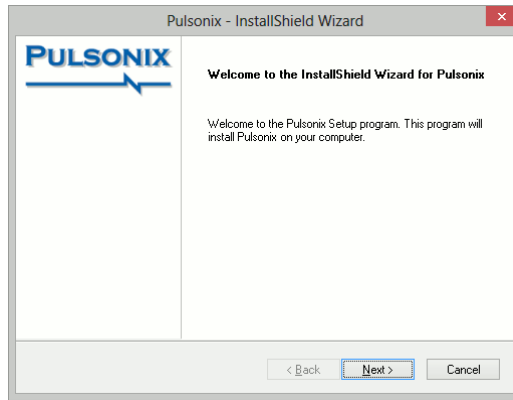
You will need either a Pulsonix CD, or the electronic download version of the Pulsonix installer. These will be used to create your **Installation Source Folder** as described below, so that all the files needed for unattended installation are collected together.

Depending on the process you will use for actually running the unattended installs (for example the capabilities of your management package) the folder you choose for your **Installation Source Folder** does not necessarily have to be directly accessible from all the workstations. We will give you the instructions needed to run unattended installs ‘directly’ using normal Windows commands and tools, and you may have to tailor those to the requirements of your particular management package.

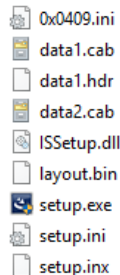
### Electronic download

Follow these steps to locate and copy the installation files from an installer you have downloaded from our web site.

1. Run the installer you have downloaded from the web site. This will automatically extract the files it needs to run the actual application installer.
2. Wait for the Welcome message to be displayed:



3. Leave the Welcome message on the screen, and launch a copy of Windows Explorer.
4. In the Explorer address bar, type %TEMP% and press Enter.
5. In Explorer, look for a recent folder with a name that begins with “pft”. Inside this you should find “setup.exe” and some “cab” and “hdr” files:



6. Copy all the files in this folder, and put your copy in a folder somewhere else. This new location will need to be accessible from all the computers on which you intend to run the unattended installation. We will call this the **Installation Source Folder**.
7. Once the files are copied, close your Explorer window then click Cancel to stop the current installation process.

### Working from CD

If you are working from a Pulsonix CD, you will still need to prepare an **Installation Source Folder** with the files needed to run the installer, but this is simpler than doing it from the electronic download because the files are already ‘unpacked’ on the CD.

Simply browse to the root folder of the CD, copy all the files from that folder, and paste them into your chosen **Installation Source Folder**.

## 6 Unattended Installation

---

### License File

You will also need a license file for each workstation on which you intend to install the software (for node-locked operation) or the details of the location of your Pulsonix Network License Server (for network/floating license operation).

The most frequent use of unattended installs is for network license operation where all the clients will have the same settings to access the network license server. Our instructions and examples in this document will assume they are for network license operation, so a license file is not needed.

If instead you need to install multiple node-locked clients, then you will need to have some kind of mechanism in place to swap the appropriate license file into position in the Installation Source Folder using the same file name before running either the initial recording stage or replaying this for each workstation.

### Recording installer choices

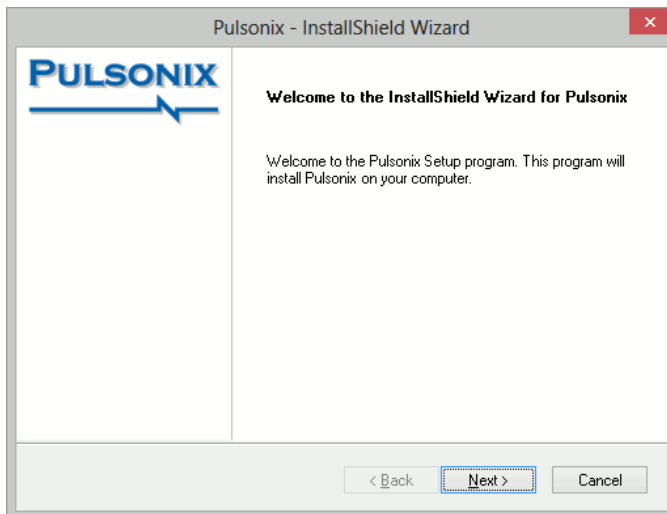
To make a record of the choices made while installing Pulsonix using the InstallShield Wizard, you need to run the Setup program to actually carry out the first installation.

From the Installation Source Folder, you will need to run **Setup.exe** with some additional parameters. In our examples we will assume that our Installation Source Folder exists on a file server called “Colossus” and that folder is on a shared resource called “Ins” that is accessible to all your workstations.

Here is an example of the recording command. The parameter “-r” tells Setup to record the steps and the choices, and the “-f1” parameter tells it where to record that information:

```
\\colossus\ins\pulsonix\setup.exe -r -f1"\\colossus\ins\pulsonix\setup.iss"
```

When the InstallShield Wizard starts, follow the instructions presented to you on the screen.



Press **Next>** to continue and simply follow the steps, providing the information that the installer needs at each step.

Don't forget that every subsequent (unattended) install will use the settings you enter in this recording phase, so the values you enter need to be appropriate for all those installations.

When you reach the final step, click **Finish** to complete the installation. The installer will now go ahead and install Pulsonix just as it would do for a normal installation.

After this has finished, you should have a normal Pulsonix installation on the current machine, and an ISS file that records the information you provided during the installation. Here is an extract from our recorded example:

```
{1001D81B-4FF0-4DA9-A171-3117CD6D182B}-SdShowDlgEdit2-0]
szEdit1=colossus
szEdit2=6140
Result=1
[1001D81B-4FF0-4DA9-A171-3117CD6D182B]-SdCustomerInfo-0]
szName=A user
szCompany=A company
nvUser=1
Result=1
[1001D81B-4FF0-4DA9-A171-3117CD6D182B]-SdAskDestPath-0]
szDir=C:\Program Files (x86)\Pulsonix10.0
Result=1
[1001D81B-4FF0-4DA9-A171-3117CD6D182B]-AskOptions-1]
Result=1
Sel-0=0
Sel-1=1
[1001D81B-4FF0-4DA9-A171-3117CD6D182B]-SdAskDestPath-1]
szDir=C:\Users\Public\Documents\Pulsonix10.0
Result=1
```

Your results may differ from those shown, but should follow the same kind of pattern.

## Replaying the installer

Once you have recorded your initial installation instructions, carrying out unattended installations on your workstations is as simple as running the Setup program again and supplying the recorded installer settings.

Here is an example of the replay command. The parameter “-S” tells Setup to replay the steps and the choices as recorded in the settings file, and the “-f1” parameter tells it where to find those choices:

```
\\colossus\ins\pulsonix\setup.exe -S -f1"\\colossus\ins\pulsonix\setup.iss"
```

As this is an unattended installation, nothing appears on the screen when running Setup in this mode. A log file called “setup.log” is created by the Setup application, which should record any issues or problems that it encountered.

## Custom installations

If your management package allows it, or you are prepared to do some more work to produce “individual” installation instruction scripts for each unattended install, then it is possible to tailor the actions taken when replaying the installation.

This topic is beyond the scope of this document, but as you can see the ISS file is an ASCII file so it should be relatively easy to understand where the settings for each dialog are stored and how you might be able to modify them.

You could do this for example to change the folder where each user looks for library files, or in the case of installing for a node-locked configuration you could alter the name of the license file each user’s software would use.